

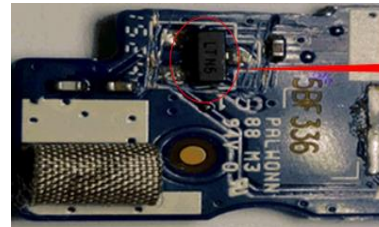
工作
項目

SQE (Supplier Quality Engineering)

1. Material Issue Checking and Analyzing (Failure Analysis)
2. Vendor Communication and Cost Down Engineering

內容
摘要

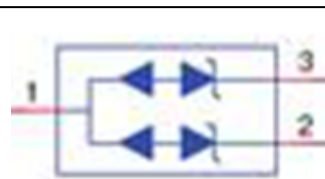
When a notebook fails to turn on, there should be something happened. If the failure issue is suffered, it will impact the factory productivity. As a result, how to figure out the root cause is important. To solve this problem, it needs the support of fundamental theory, personal experience, and engineering experiment.



ESD Diode

A power button board

p1



ESD diode, TVS (Transient Voltage Suppressor)

p2

Introduction

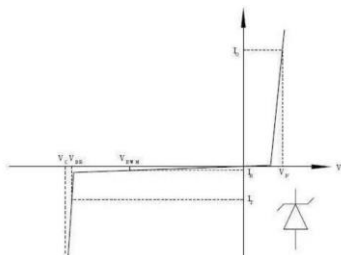
Problem description: The issue is related to the voltage applied for power button board. The voltage was too low to turn on notebook. The specific notebook module has been sold in many countries, but the issue was only found in India.

First	Some assumptions are made due to the fundamental theory and personal experience.
Second	It is necessary to judge that the possibility of happening.
Final	There should be experiments to verify the assumptions and solve the issue.

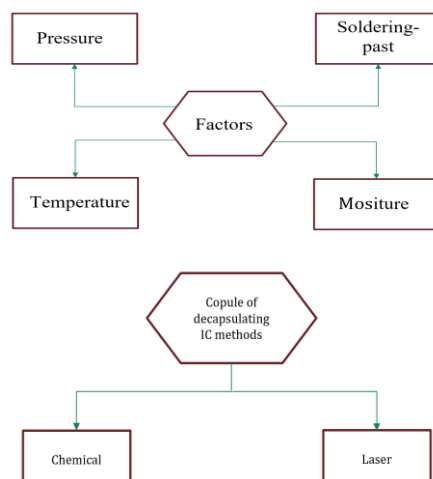
實習
成果

TVS (Transient Voltage Suppressor)

One kind of diode which character is familiar with Zener diode. TVS can afford much higher inverse current than Zener.



Theory



Experiment

Some methods of failure analysis Initial were used, i.e. testing IC resistance during heating, checking the diode structure with laser de-cap and so on.



At the beginning of internship, I was very excited. However, something came out, which were unexpected. I suffered many engineering problems that I didn't have the related experience. The time was hard with working pressure. However, I tried to do what I can. I co-worked with my team and vendor for FA engineering. After one-year internship, I got much experience for vendor communication and FA engineering.